



OSIL
Environmental Instruments
and Systems

Micro Profiling Winch

Compact programmable profiling winch

An extremely compact and programmable direct drive profiling winch suitable for integration on floating platforms (i.e. data buoys) and Autonomous Surface Vehicles.

The winch is equipped with a transparent interface for motor control and feedback.

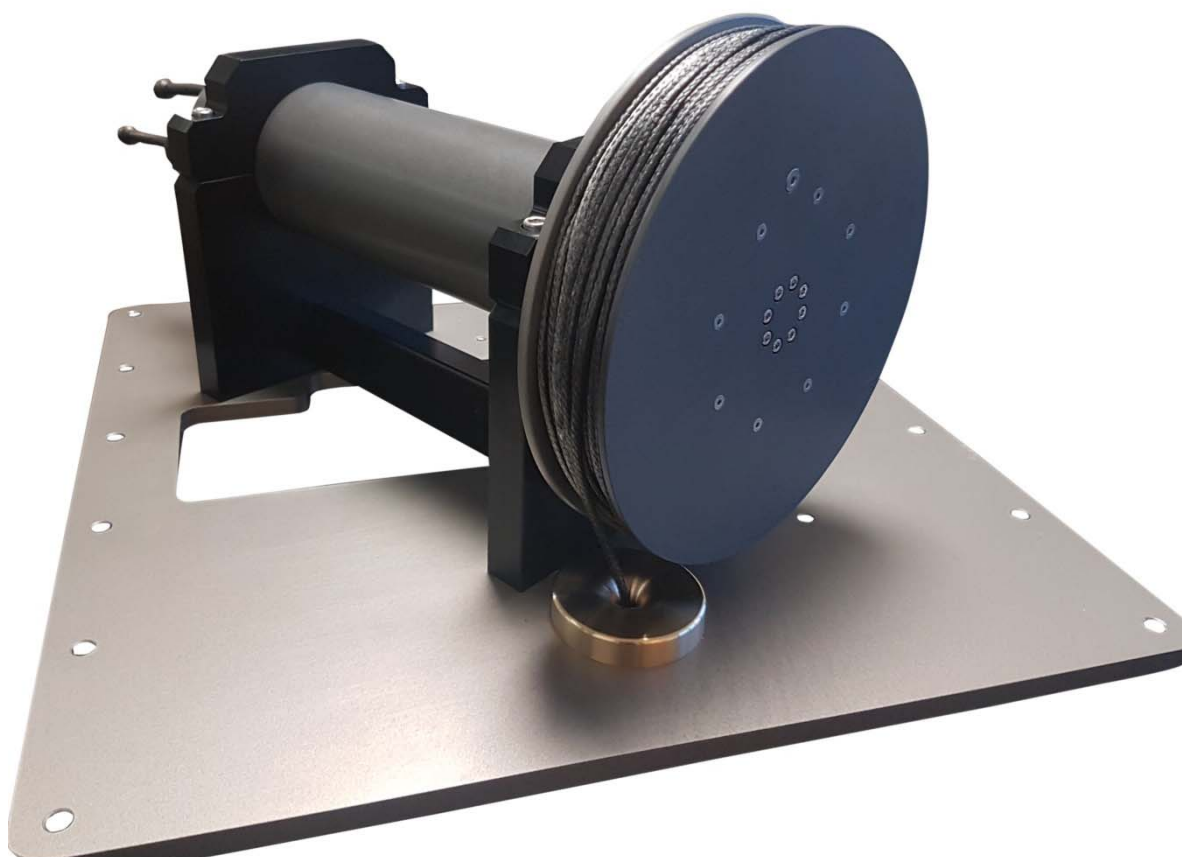
The system can provide notification of successful docking and zeroing of the winch position in addition to payout readings, and is fitted with an automatic internal brake.

FEATURES

- Payout readings
- Automatic internal brake

Applications

- Camera deployment
- Current profiling
- Water quality profiling
- Sound Velocity profiling
- Hydrophone deployment



FOR FURTHER INFORMATION PLEASE CONTACT:

OSIL, Culkin House, C7/8 Endeavour Business Park, Penner Road, Havant, Hampshire PO9 1QN
T: +44 (0) 2392 488240 E: osil@osil.com W: www.osil.com



OSIL
Environmental Instruments
and Systems

Micro Profiling Winch

Specifications

Materials & Finishing	High strength 7075 aluminium (hard anodised), Delrin
Motor Current Requirement	24V DC @ 8A
Holding Capacity	5kg
Line Diameter	2mm
Max. Line Pull	5kg at first layer
Line Speed	~0.5m/s
Drum Capacity	100m @ 2mm
Bolt Pattern	User configurable
Dimensions	393 x 200 x 225(h)mm
Weight	12kg

Sliprings are available on request



FOR FURTHER INFORMATION PLEASE CONTACT:

OSIL, Culkin House, C7/8 Endeavour Business Park, Penner Road, Havant, Hampshire PO9 1QN
T: +44 (0) 2392 488240 E: osil@osil.com W: www.osil.com